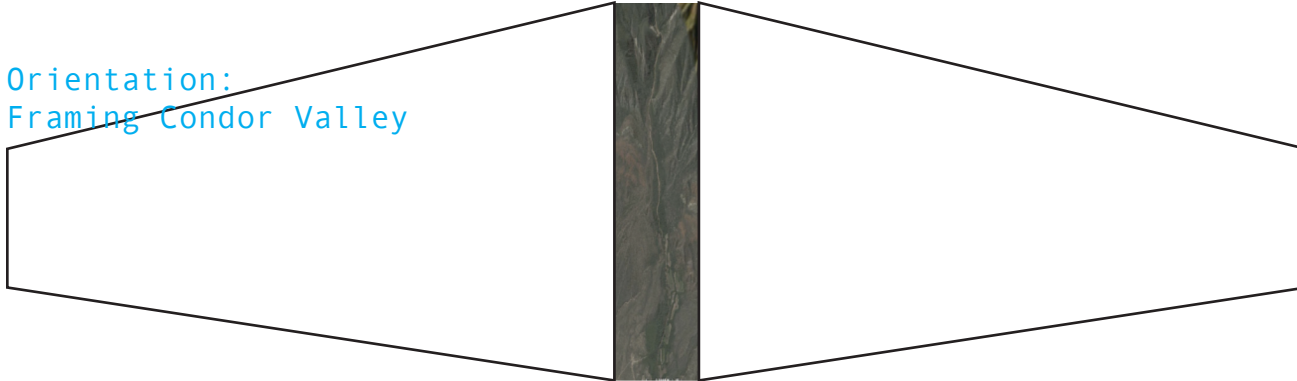


horse stables

argentina 2007



Orientation:
Framing Condor Valley



Layout:
Datum Lines of Condor valley
and Condor Observatory



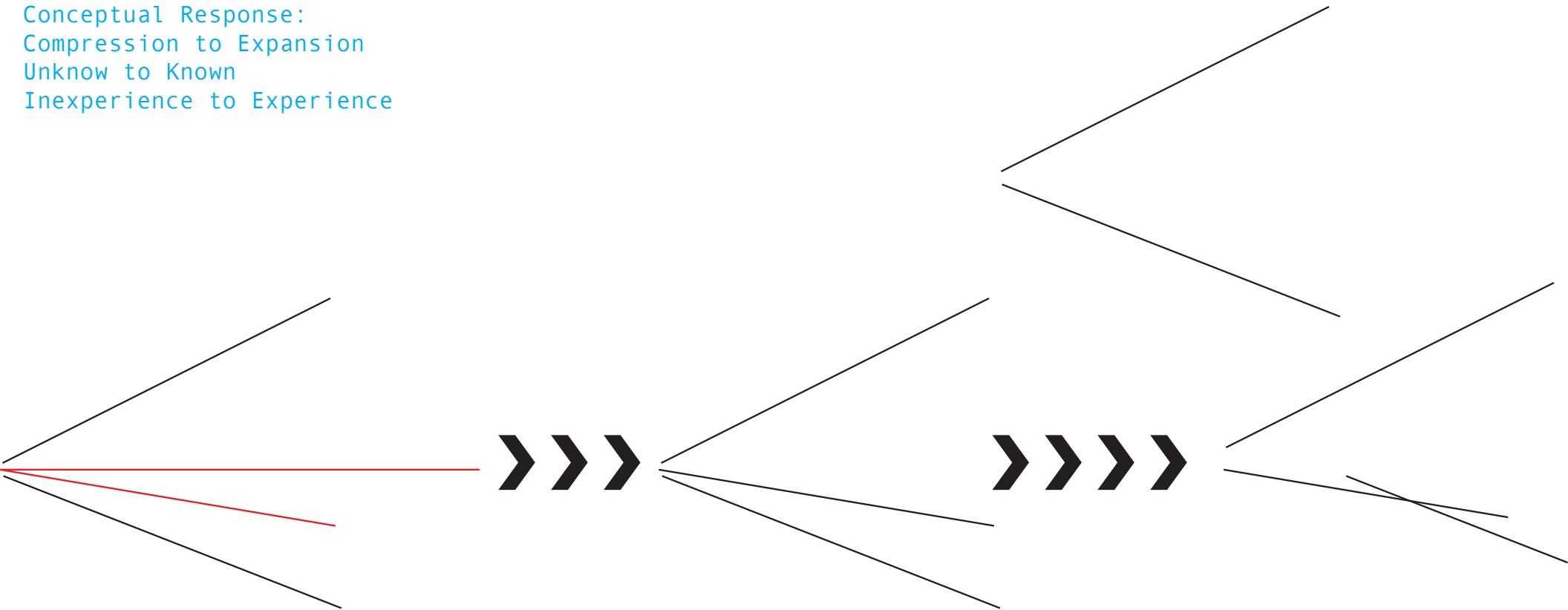
site concept drawings renderings proposal

horse stables

argentina 2007



Conceptual Response:
Compression to Expansion
Unknow to Known
Inexperience to Experience



site **concept** drawings renderings proposal

horse stables

argentina 2007



siteconceptdrawingsrenderingsproposal

horse stables

argentina 2007



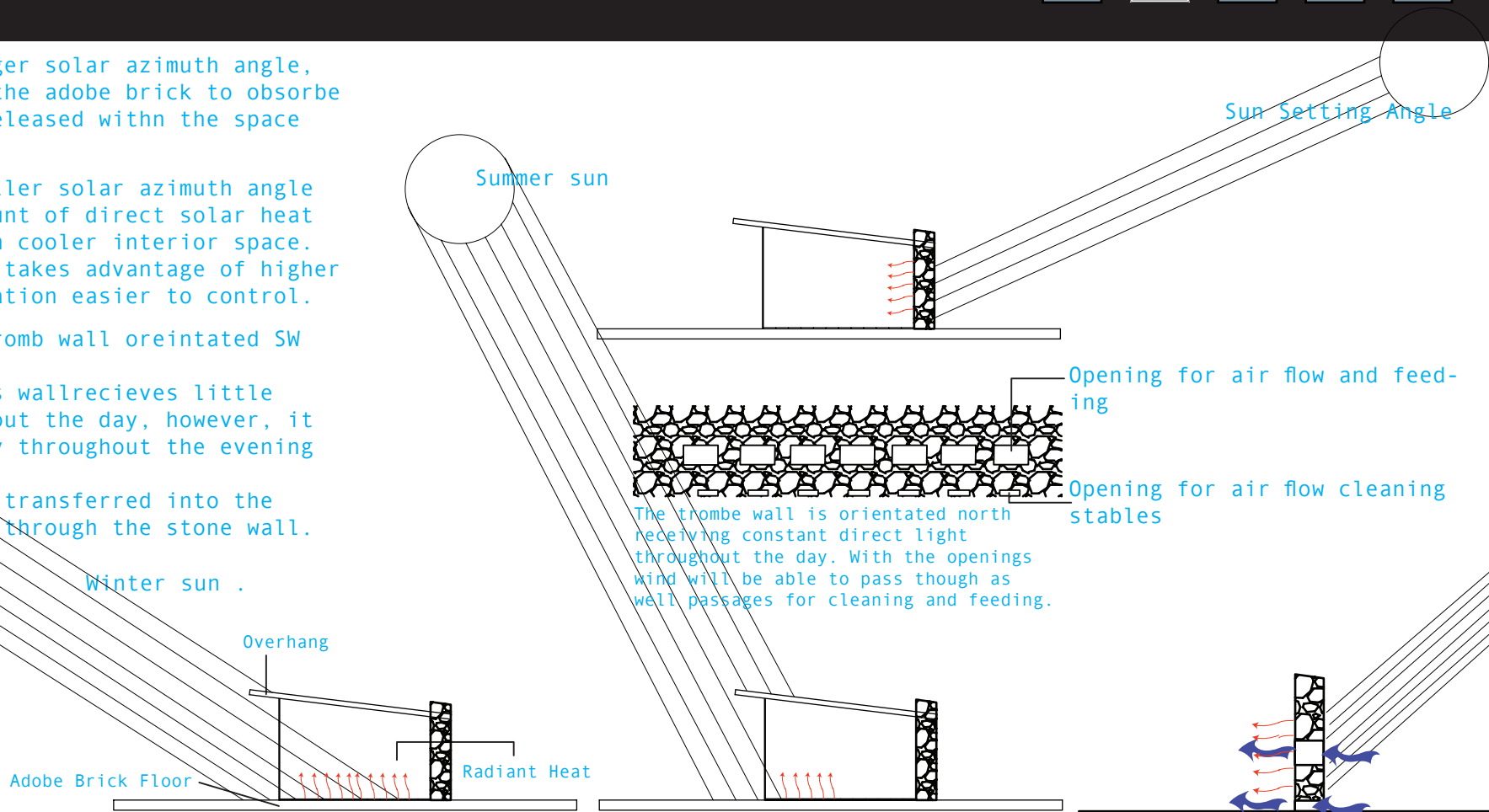
Winter sun has a larger solar azimuth angle, this in turn allows the adobe brick to absorb radiant heat to be released within the space throughout the day

Summer sun has a smaller solar azimuth angle which limits the amount of direct solar heat gain providing a much cooler interior space. The use of overhangs takes advantage of higher glare and solar radiation easier to control.

The Cabanas have a trombe wall orientated SW within the site.

The placement of this wall receives little direct light throughout the day, however, it receives direct light throughout the evening hours.

Heat from the sun is transferred into the space via conduction through the stone wall.



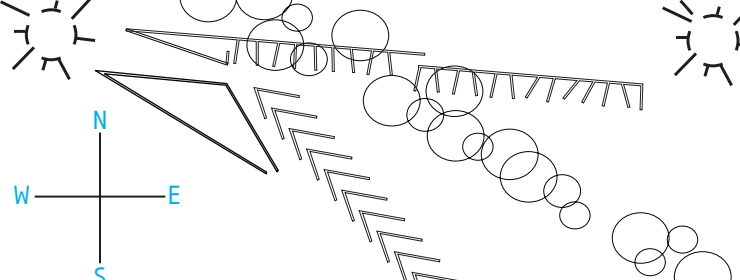
siteconcept **drawings** renderings proposal

horse stables

argentina 2007



Winter winds flow in from the south. Which provides a cool air current, which cycles the radiant heat throughout the space. Considering the heat is transferred to the interior conduction through the stone wall.

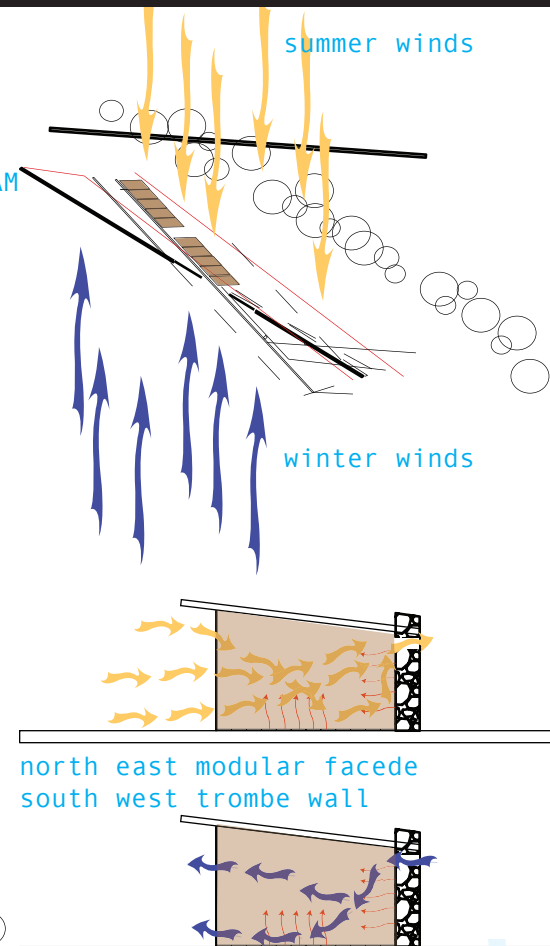
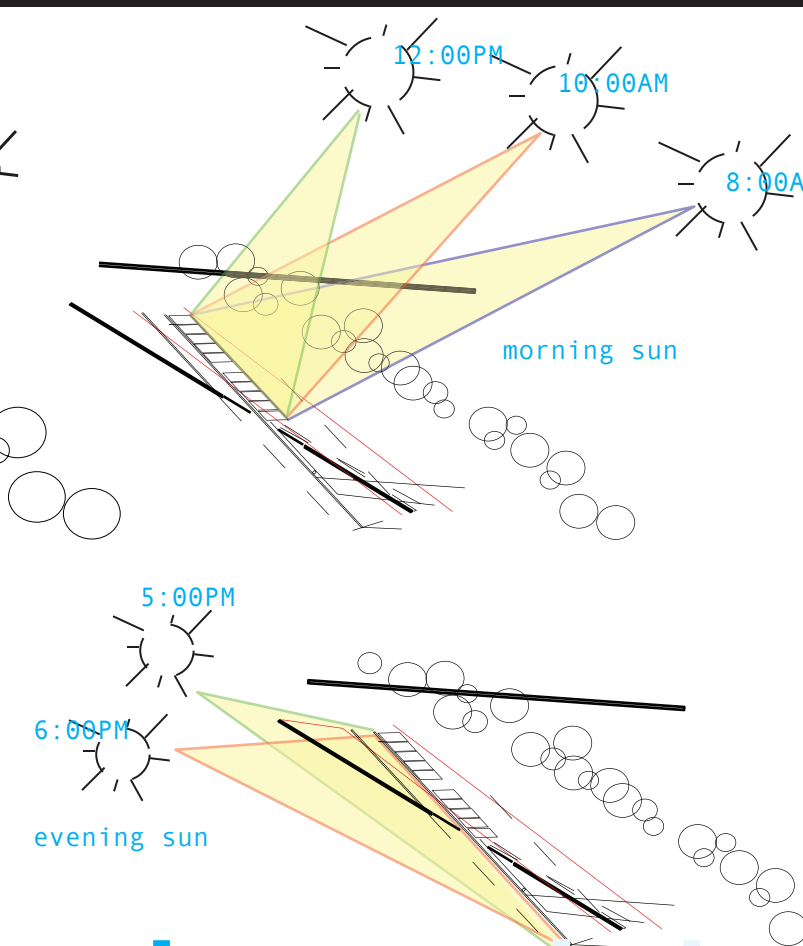


The North East facing facade provides opportunity to receive optimal natural light and an open flow of summer winds. The North East orientation also captures a large amount of direct heat gain during the winter months.

Overhangs- provide shading for natural light as well as an location to place PV panels.

Adobe Brick Floor- provides radiant heat and provides internal thermal mass.

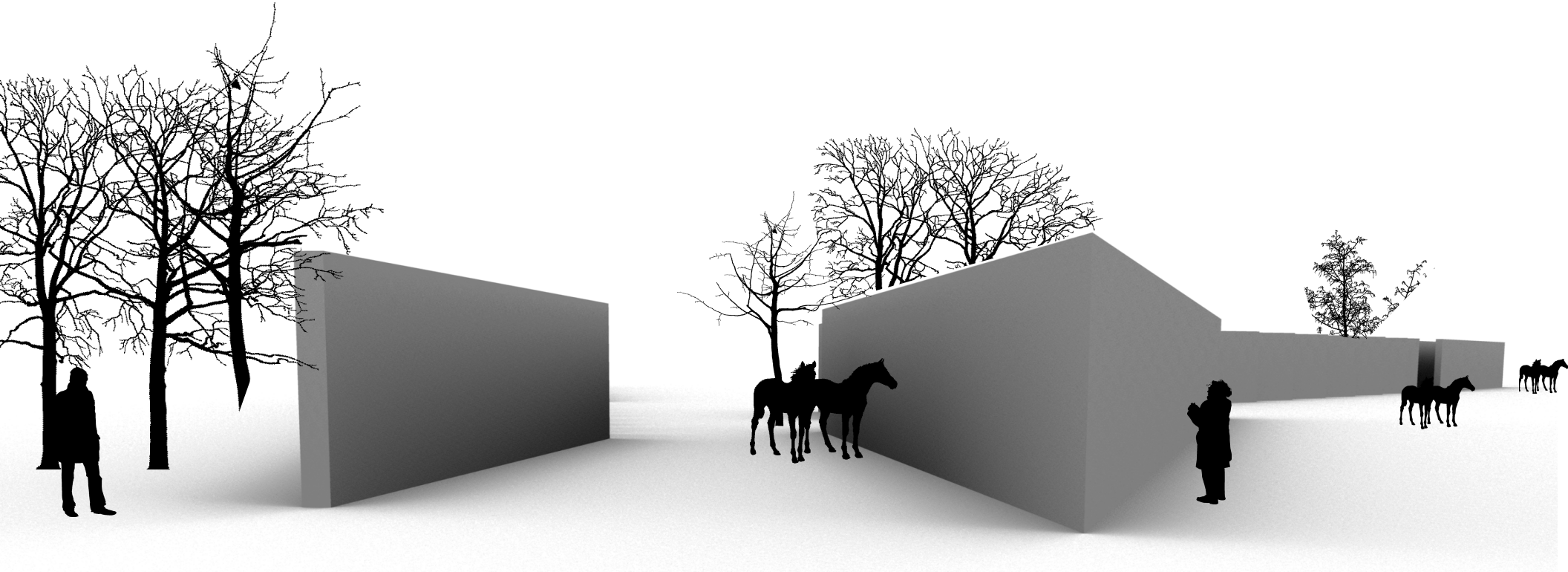
Wood-acts a natural repellent as well as the modular front. 2"x12" on pivot developing an open space exposed to the natural elements of the site.



siteconcept **drawings** renderings proposal

horse stables

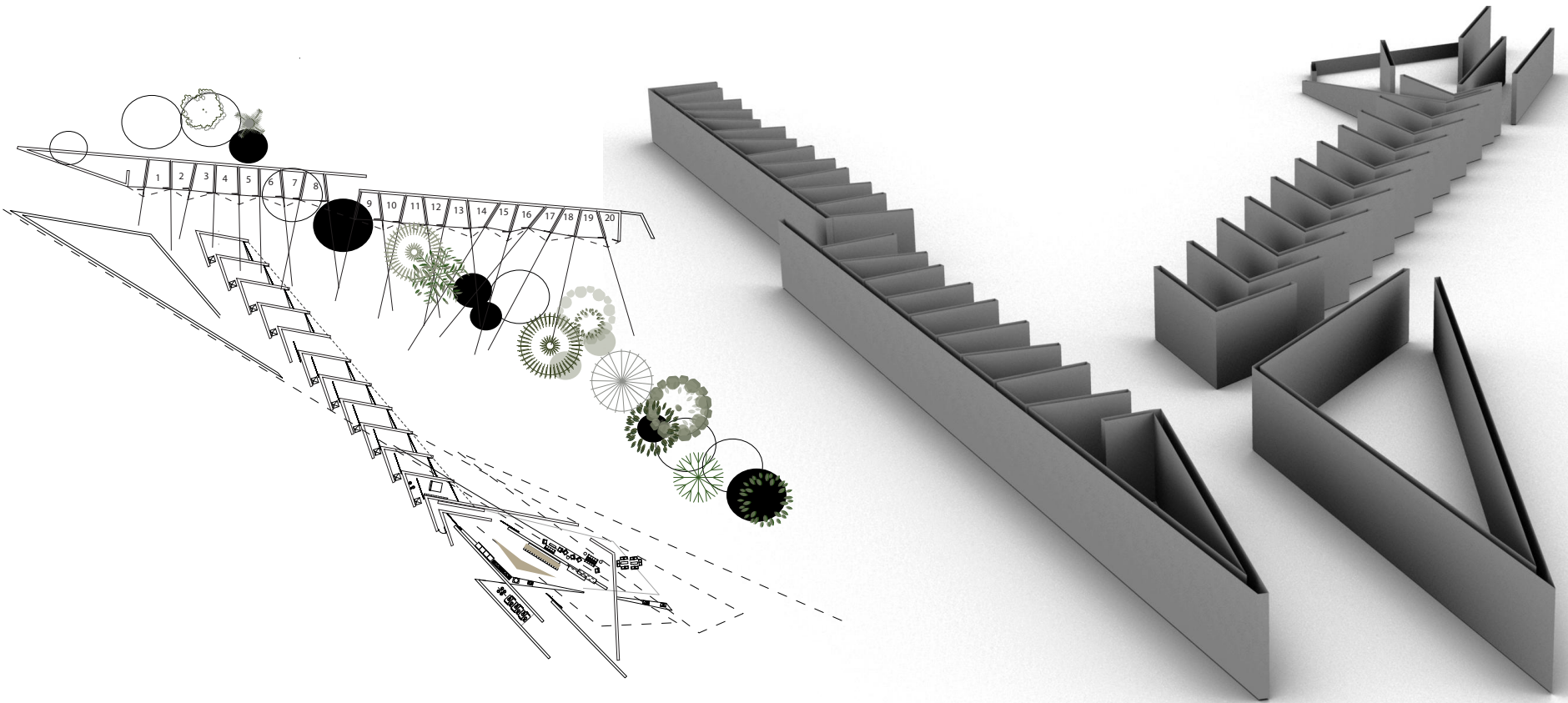
argentina 2007



siteconceptdrawings**renderings**proposal

horse stables

argentina 2007



site concept drawings renderings **proposal**